

THE NetworkGuy

DECEMBER 2021 \ VOLUME 2 \ ISSUE 12

What's Inside...

Have You Seen Our Latest Television Commercial?

The Network Guy Quiz Challenge

Learn from The Network Guy

Are You Looking for Some Last Minute Stocking Stuffers?

Have You Seen our Makeover?

We're Looking Ahead to 2022 and Beyond...



Learn from The Network Guy

I have suddenly stopped receiving my PenTeleData emails. What could be wrong?

The Network Guy:

PenTeleData is in the process of migrating all email accounts to a new, upgraded platform. If you have been using a long-standing shortcut on your device, you may be connecting to an outdated link. Instead, you can visit www.ptd.net/webmail. Just enter your email name and password and you'll be all set!

If you need additional assistance, our Technical Support is available 24/7 at 1-800-281-3564.

Have You Seen Our Latest Television Commercial? (Did We Mention Some Amazing Drone Footage??)

PenTeleData is keeping our communities (and other parts of the world) connected! From homes and schools, to banks, hospitals, retail businesses, government, and more, people rely on OUR network. Need proof or just want to see some amazing drone footage of the areas we serve? Watch our latest media spot on YouTube at <https://www.youtube.com/watch?v=wpYRC4TXqgQ>



The Network Guy Quiz Challenge

PenTeleData is giving one lucky winner a \$150 Amazon Gift Card. Just visit www.ptd.net/quiz-challenge by **December 31, 2021** to answer the question below. We will select a winner at random from all correct entries. **Good Luck!**

Which of the following are true about PenTeleData's newly redesigned residential website, www.ptd.net?



Are You Looking for Some Last Minute (But Really Cool) Stocking Stuffers?

Here are a few ideas:

Portable Bluetooth Speaker

PopSockets

Wireless Charging Pad

Selfie Ring Light

Rechargeable Hand Warmers

Remote Controlled LED Light Strip

Charging Hub

Reusable Smart Notebook

Booklight

Power Bank

*Lightening/Charging Cables
(the longer, the better!)*

Another hint: Don't forget the batteries for the bigger gifts!

"A true hero isn't measured by the size of their strength, but by the strength of their heart."

– Zeus in Hercules

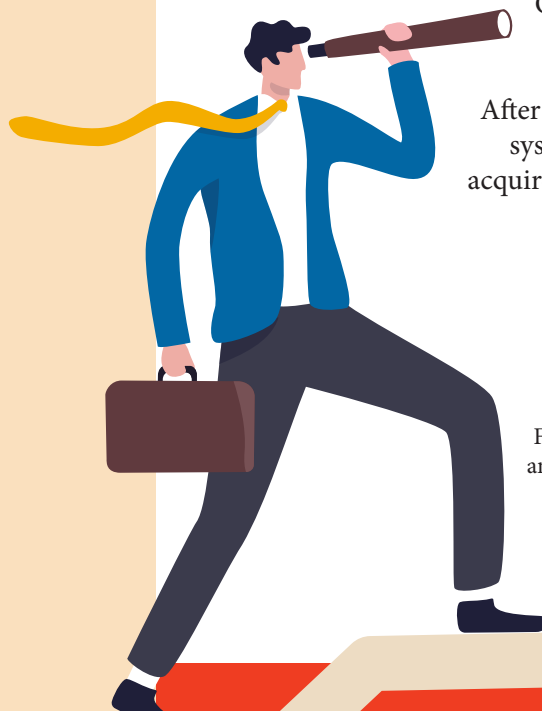
Have You Seen our Makeover?

Our residential website has a fresh, new look! Don't worry though, the page's main functionality remains the same. You still have all the features you already use and enjoy:

- Webmail is a bright red button on the upper right-side of the page and is also a main tab in the middle of our homepage.
- Our speed test, account management, billing, contact information, and search feature is all in the upper right corner of our homepage.
- Our online chat option is available from the red "Help" button on the bottom right corner.

If you haven't already been using the features we've listed, we're sure you'll find something helpful. So, without further ado (insert your favorite upbeat runway music here), we invite you to view our new www.ptd.net!

We're Looking Ahead to 2022 and Beyond...



Our partner, Blue Ridge Communications recently announced the beginning of a complete Fiber-to-the-Home rebuild of its cable systems. After successfully deploying its first Fiber-to-the-Home system in rural Westfield, PA, Blue Ridge will take its acquired knowledge and begin rebuilding its 8,000 miles of cable plant, passing over 250,000 homes in Northeastern Pennsylvania.

Blue Ridge, like most operators, saw significant increases in customers and usage during the pandemic and only sees that trajectory continuing for today's workforce, schools, and the future expansions of telehealth. Their current 1 Gig Hybrid Fiber Coax network already offers speed and reliability, but Fiber-to-the-Home will allow for ultrafast symmetrical speeds and increased reliability, along with the environmental benefits of lower power consumption. This significant capital investment is the next step in the evolution of the network to meet the needs of today and the future.